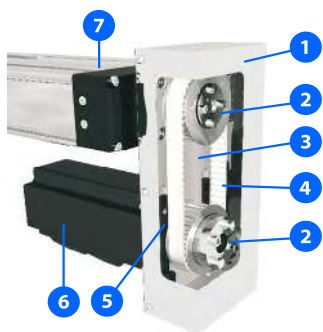


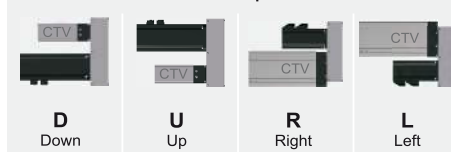
## STRUCTURAL DESIGN



- 1 - Cover
- 2 - Attachment of pulley with clamping set
- 3 - Anodized aluminium housing
- 4 - Toothed belt
- 5 - Belt tensioning system (elongation and frequency of belt span provided with delivery of unit)
- 6 - Motor
- 7 - Linear unit - CTV / MTV

**i** The linear unit must be executed with drive journal without keyway, so that the MSD drive can be mounted on it.

Possible installation positions of MSD



## HOW TO ORDER

**MSD - CTV 110 - T2 - 1,5 - MSM040B**

Motor Side Drive:

Linear Unit series :

CTV / MTV

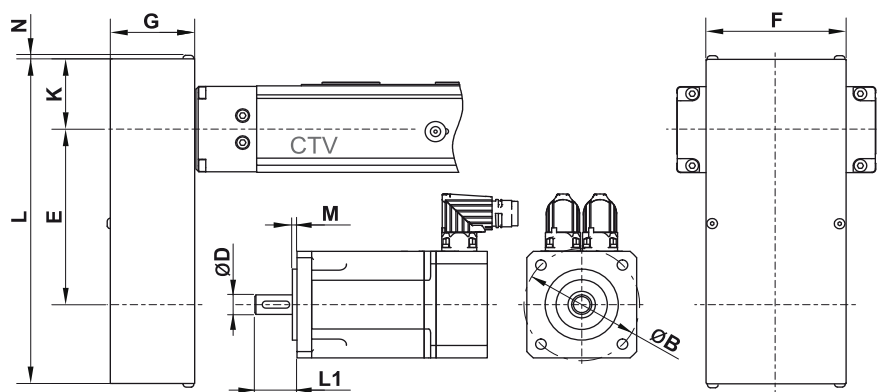
Type :

Motor type :

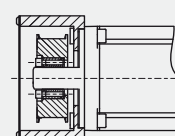
According to customer's drawing

Gear ratio :

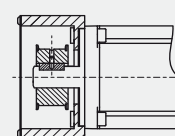
## TECHNICAL DATA AND DIMENSIONS



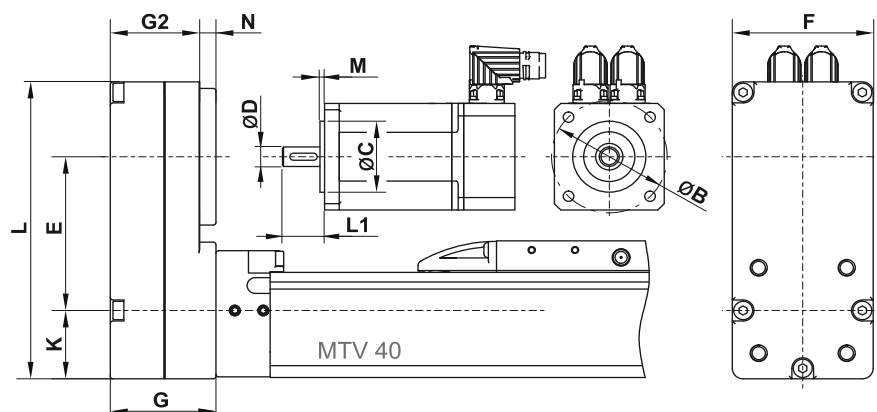
Clamping set



Keyway



MTV 40



TECHNICAL DATA AND DIMENSIONS

Technical data

Linear Unit	Type	Gear ratio	Max. drive torque (linear unit)	** Max. radial load on shaft	Mass moment of inertia	Mass ***	Motor size limits [ mm ]								
							ØB max	ØC max	*M max	L1			ØD		
		Clamping set	min	max	Clamping set	min				Keyway	max				
MTV 40	T1	1	1,3	60	4,6	0,5	60	36	4	****	20	32	8	>8	12
		1,5	1,3	60	5,4	0,5							8	-	-
MTV 40	T2	1	3	80	45	0,8	80	52	4		25	39	19	-	-
		1,5	3	80	31	0,7							10	>10	14
CTV 90	T1	1	2,7	90	75	0,8	70	-	4		25	39	19	-	-
		1,5	2,7	90	45	0,7							10	>10	14
CTV 110 MTV 65	T1	1	5	175	70	0,8	70	-	4		25	39	19	-	-
		1,5	5	175	45	0,8							10	>10	14
CTV 110 MTV 65	T2	1	9	245	210	1,5	100	-	4		30	49	22	-	-
		1,5	11	235	330	1,5							19	>19	28
CTV 145 MTV 80	T1	1	13	350	210	1,5	100	-	4		30	49	22	-	-
		1,5	19	410	330	1,6							19	>19	28
CTV 145 MTV 80	T2	1	19	410	550	3,0	130	-	4		35	59	35	-	-
		2	24	375	860	2,9							19	>19	28
CTV 200 MTV 110	T1	1	25	500	640	3,8	130	-	4		35	59	35	-	-
		2	25	400	960	3,6							19	>19	28

(max. drive speed: 3000 1/min; No load torque: approx. 0,5 Nm)

\*For a bigger value an additional adapter plate is used. For the case of MTV 40 a thicker plate may be used.

\*\*This is the load which is linearly dependent on the max. drive torque and is generated by the correct pretension of the belt. This load needs to be reduced in accordance with the capabilities of the motor.

\*\*\*This is an average value. It could differ depending to the motor dimensions.

\*\*\*\*Minimum dimension L1 depends on the size of particular clamping set. Values can be found in the table on page 7.105.0.

Dimensions

Linear Unit	Type	Gear ratio i	Dimensions [ mm ]						
			E (± 0,5)	L	F	G	G2	K	N
MTV 40	T1	1	58,5	113	52	39	33	26	6 *
		1,5	59						
MTV 40	T2	1	65	135	68	42	36	31	8 *
		1,5	64,5						
CTV 90	T1	1	100	179	70	41	-	31	2
		1,5	102						
CTV 110 MTV 65	T1	1	100	179	70	41	-	31	2
		1,5	112						
CTV 110 MTV 65	T2	1	145	250	90	51	-	43	2
		1,5	139						
CTV 145 MTV 80	T1	1	145	250	90	51	-	43	2
		1,5	180						
CTV 145 MTV 80	T2	1	160	297	120	61	-	56	2,5
		2	158						
CTV 200 MTV 110	T1	1	268	403	120	61	-	56	2,5
		2	267						

\*This is a standard value. It could differ depending to the motor dimensions M and L1.

## TECHNICAL DATA AND DIMENSIONS

Minimum dimension L1 [mm] depends on the motor shafts diameter ØD

Linear Unit	Type	Gear ratio i	ØD [mm]																											
			4	5	6	6,35	7	8	9	9,53	10	11	12	14	15	16	17	18	19	20	22	24	25	25,4	28	30	32	35		
MTV 40	T1	1	17	17	17	17	17	17	-	-	-	-	-	-	-	-	-	-	-	-	-	-	-	-	-	-	-	-		
		1,5	17	17	17	17	20	20	-	-	-	-	-	-	-	-	-	-	-	-	-	-	-	-	-	-	-	-		
MTV 40	T2	1	-	-	17	17	17	17	18	18	18	18	18	22	22	22	25	25	25	-	-	-	-	-	-	-	-	-		
		1,5	-	-	17	17	17	17	18	18	18	-	-	-	-	-	-	-	-	-	-	-	-	-	-	-	-	-		
CTV 90	T1	1	-	-	23	23	23	23	24	24	24	24	24	28	28	28	31	31	31	-	-	-	-	-	-	-	-	-		
		1,5	-	-	23	23	23	23	24	24	24	-	-	-	-	-	-	-	-	-	-	-	-	-	-	-	-			
CTV 110 MTV 65	T1	1	-	-	23	23	23	23	24	24	24	24	24	28	28	28	31	31	31	-	-	-	-	-	-	-	-	-		
		1,5	-	-	23	23	23	23	24	24	24	-	-	-	-	-	-	-	-	-	-	-	-	-	-	-	-			
CTV 110 MTV 65	T2	1	-	-	-	-	-	23	24	24	24	24	24	28	28	28	31	31	31	31	31	-	-	-	-	-	-			
		1,5	-	-	-	-	23	23	24	24	24	24	24	28	28	28	31	31	31	-	-	-	-	-	-	-	-			
CTV 145 MTV 80	T1	1	-	-	-	-	-	-	24	24	24	24	24	28	28	28	31	31	31	31	31	-	-	-	-	-	-			
		1,5	-	-	-	-	-	-	24	24	24	24	24	28	28	28	31	31	31	-	-	-	-	-	-	-	-			
CTV 145 MTV 80	T2	1	-	-	-	-	-	-	-	-	-	-	29	33	33	33	36	36	36	36	36	40	40	40	40	40	43			
		2	-	-	-	-	-	-	29	29	29	29	29	33	33	33	36	36	36	-	-	-	-	-	-	-	-			
CTV 200 MTV 110	T1	1	-	-	-	-	-	-	-	-	-	-	29	33	33	33	36	36	36	36	36	40	40	40	40	40	43			
		2	-	-	-	-	-	-	29	29	29	29	29	33	33	33	36	36	36	-	-	-	-	-	-	-	-			